

UC Health Longs Peak Medical Center
1750 E. Ken Pratt Boulevard
Longmont, CO 80504



Built during the height of the COVID-19 pandemic, this medical center utilized over 100,000 sq. ft. of prefabricated EIFS panels to overcome supply and manpower constraints. Despite early hesitation, the team achieved a façade nearly indistinguishable from traditional brick and stone at a fraction of the cost. With finishes resembling stacked stone, wood, and brick, the building delivers the look of a premium exterior while benefiting from the efficiency and value of panelization.



7 One River North
3930 Blake St
Denver, CO 80205

Rising above Denver's River Art District, this 16-story residential tower features a dramatic façade with open-air crevasses and 13,000 sq. ft. of outdoor spaces. Using more than 100 multi-story prefabricated EIFS panels, the design delivers both striking curves and lasting performance. Prefabrication ensured quality, accelerated the schedule, and secured a 20-year warranty—resulting in a visually dynamic and durable high-rise envelope.



EIMA EIFS INDUSTRY
MEMBERS
ASSOCIATION

Why EIFS?

EIFS (Exterior Insulation and Finish Systems) offer unsurpassed energy efficiency, flexibility in design, and long-term durability. From modern high-rises to historic renovations, EIFS proves its value across Denver's architectural landscape.

www.eima.com

EIFS MAP
ON THE
denver



1 X Denver 2

Discover seven standout EIFS buildings in Denver, CO. This self-guided tour highlights innovation, sustainability, and architectural beauty—all brought to life through EIFS.

1

X Denver 2
(cover photo)
2130 Arapahoe St.
Denver, CO 80205

With vibrant amenities and over 300 apartments, X Denver 2 showcases the power of prefabricated EIFS. More than 1,000 panels—including 909 EIFS—were installed with exacting precision, aligning over 43,000 linear feet of chamfered reveals. The result is a complex, time-sensitive project delivered with speed, efficiency, and lasting design impact.

2

One Platte
1701 Platte St.
Denver, CO, 80202

This landmark mixed-use office building pairs expansive glass with prefabricated masonry panels to cut envelope construction time by three months and reduce wall weight by 67%, creating a cost-effective, high-performance exterior.

Plan a visit today to experience how EIFS continues to shape Denver's skyline.

3

One Seven at Belleview Station
4882 S Newport St.
Denver, CO 80237

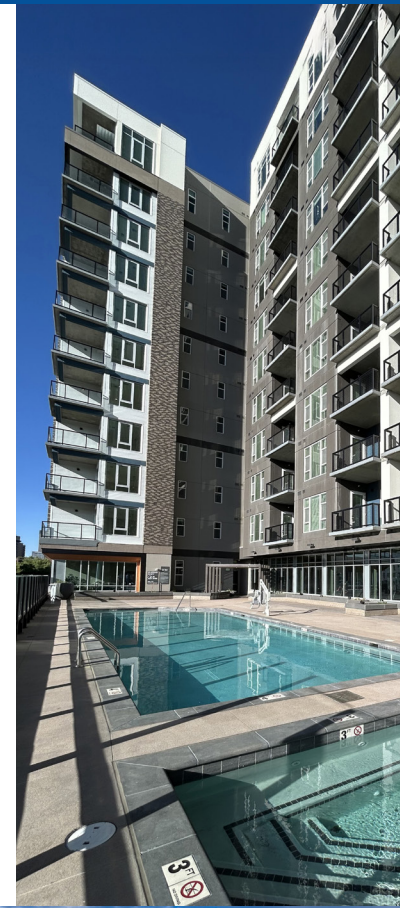
Blending luxury apartments, office space, and premier amenities, One Seven at Belleview Station showcases the efficiency of prefabricated EIFS. With 692 EIFS panels and 193 backup panels, the project achieved faster timelines, safer installation, and reduced onsite clutter—delivering superior quality with modern design appeal.



5

Avalon Governor's Park
200 E 7th Ave.
Denver, CO 80203

Avalon Governor's Park Apartments bring modern design and efficiency together with 922 prefab panels, including EIFS and lightweight masonry. This approach reduced costs, accelerated timelines, and minimized carbon footprint while delivering a bold, multi-clad façade with striking balcony finishes—all hallmarks of the benefits of panelization.



4

19Nineteen Mile High
1919 Mile High Stadium Circle
Denver, CO, 80204

Just steps from Mile High Stadium, 19Nineteen Mile High blends modern living with breathtaking city views. This 12-story multifamily residence features sleek white and gray finishes that echo Colorado's surrounding natural beauty. Designed for efficiency as well as style, the project's EIFS cladding was installed in the field over prefabricated panels built off-site—saving time while ensuring a seamless, high-quality finish.

